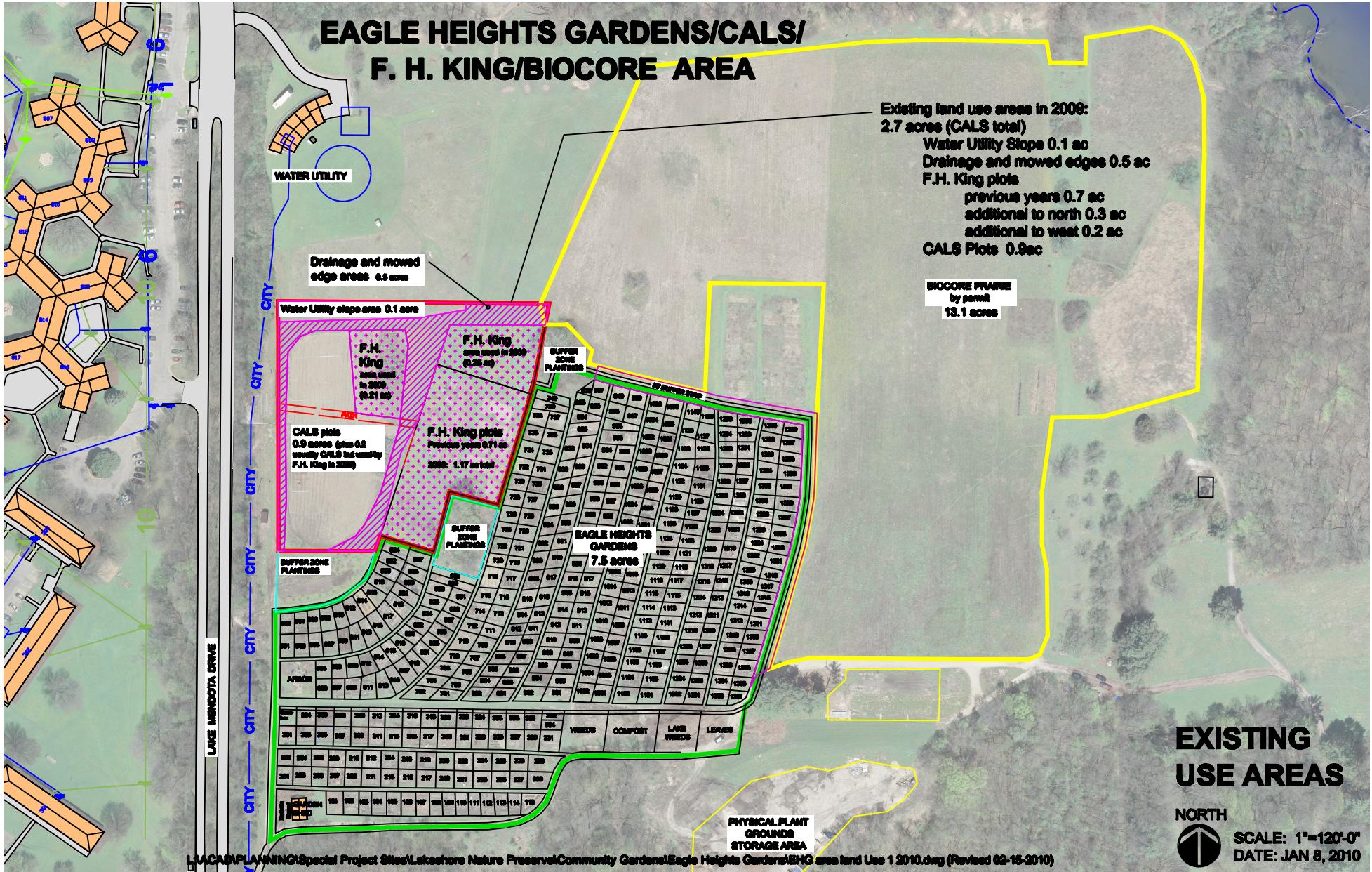


# EAGLE HEIGHTS GARDENS/CALS/ F. H. KING/BIOCORE AREA



Existing land use areas in 2009:  
**2.7 acres (CALS total)**  
 Water Utility Slope 0.1 ac  
 Drainage and mowed edges 0.5 ac  
 F.H. King plots previous years 0.7 ac  
 additional to north 0.3 ac  
 additional to west 0.2 ac  
 CALS Plots 0.9ac

BIOCORE PRAIRIE  
 by permit  
 13.1 acres

**EXISTING  
 USE AREAS**

NORTH



SCALE: 1"=120'-0"  
 DATE: JAN 8, 2010